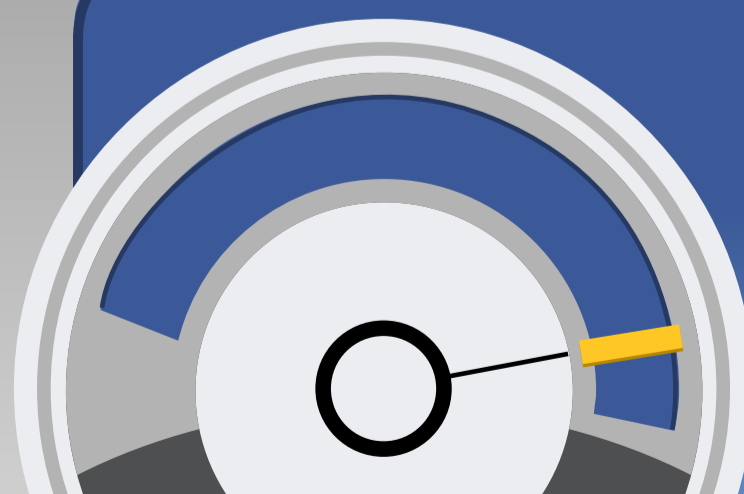


LEAKAGE & PRESSURE INSPECTION BBULL PULSE



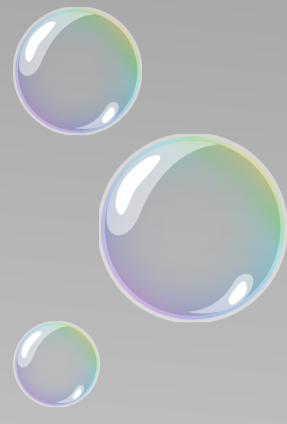
- Detects leaking containers reliably
- Inspecting up to 90.000 containers per hour
- Nearly contact-free
- No squeezing
- Compact design / easy to integrate
- Low wear and tear



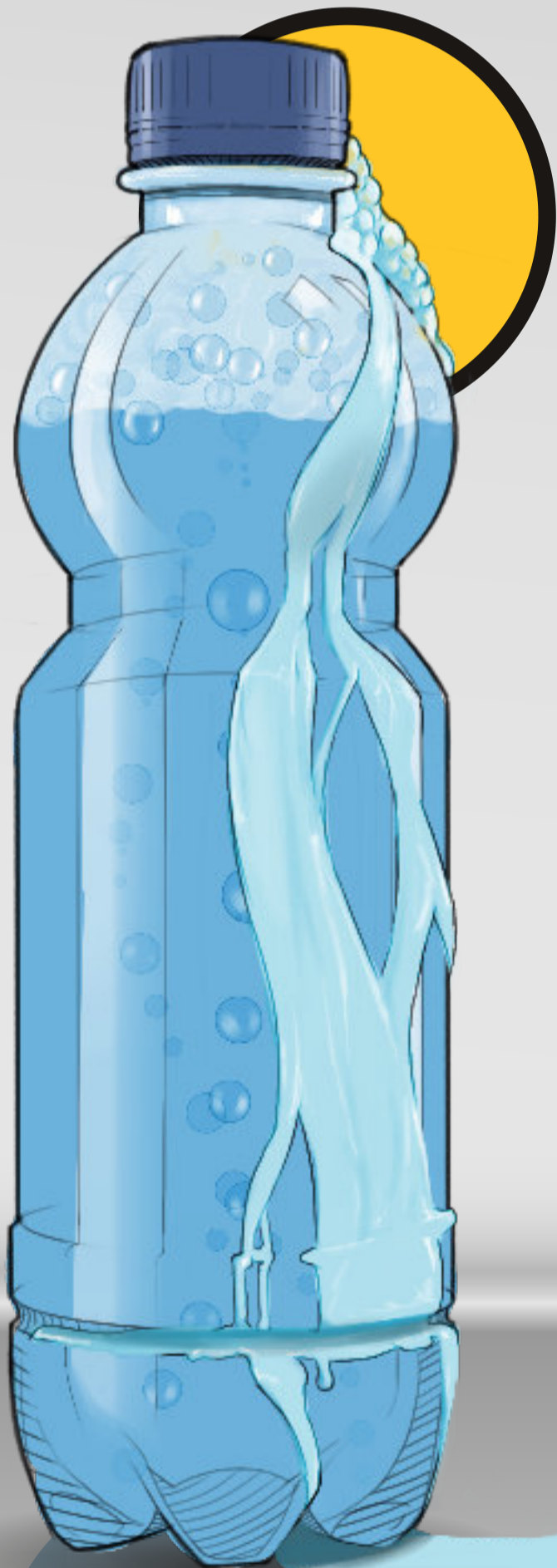
90.000 cph

APPLICATION

Containers with nitrogen or CO²



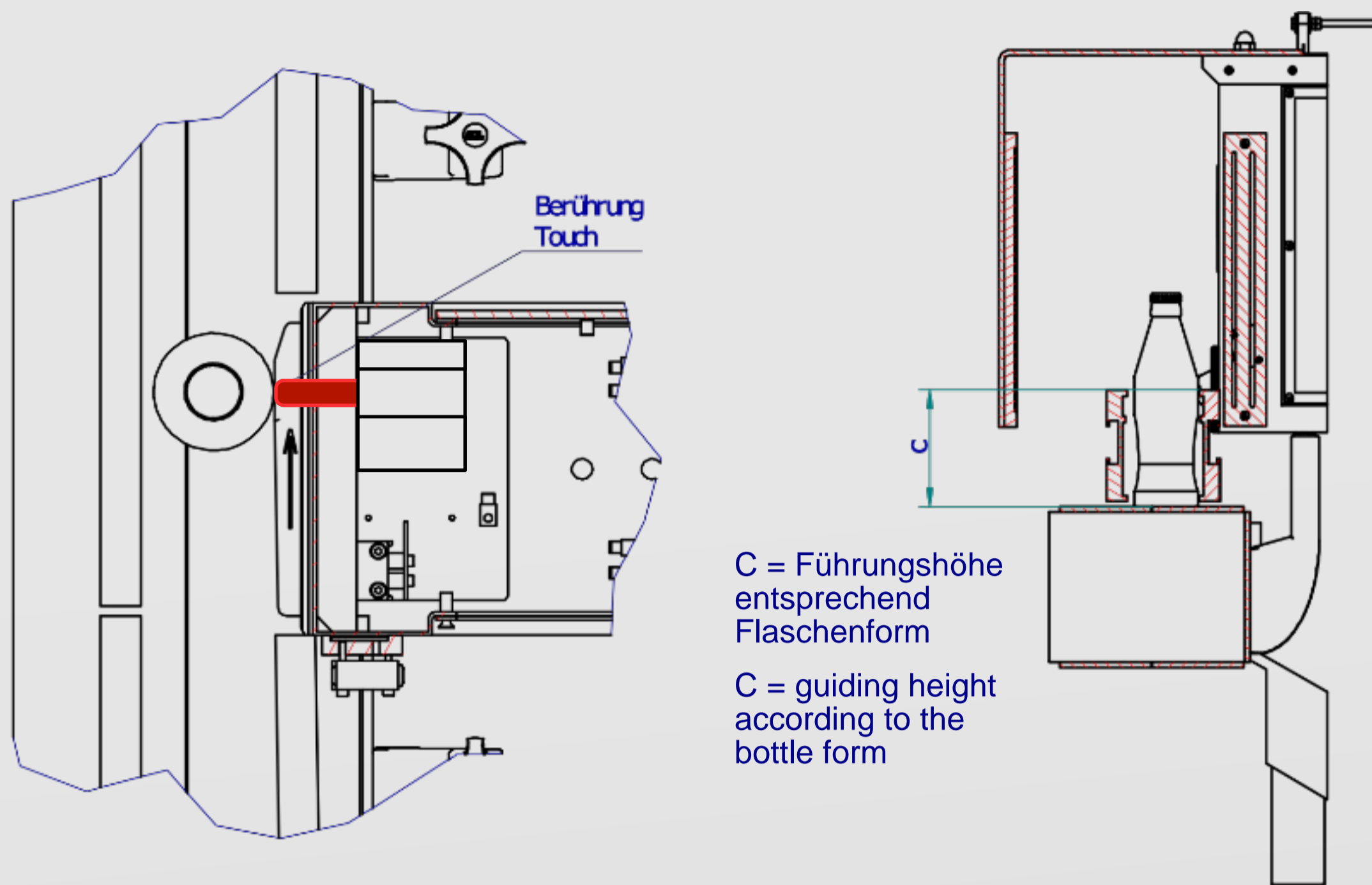
ONE-WAY PET BOTTLES



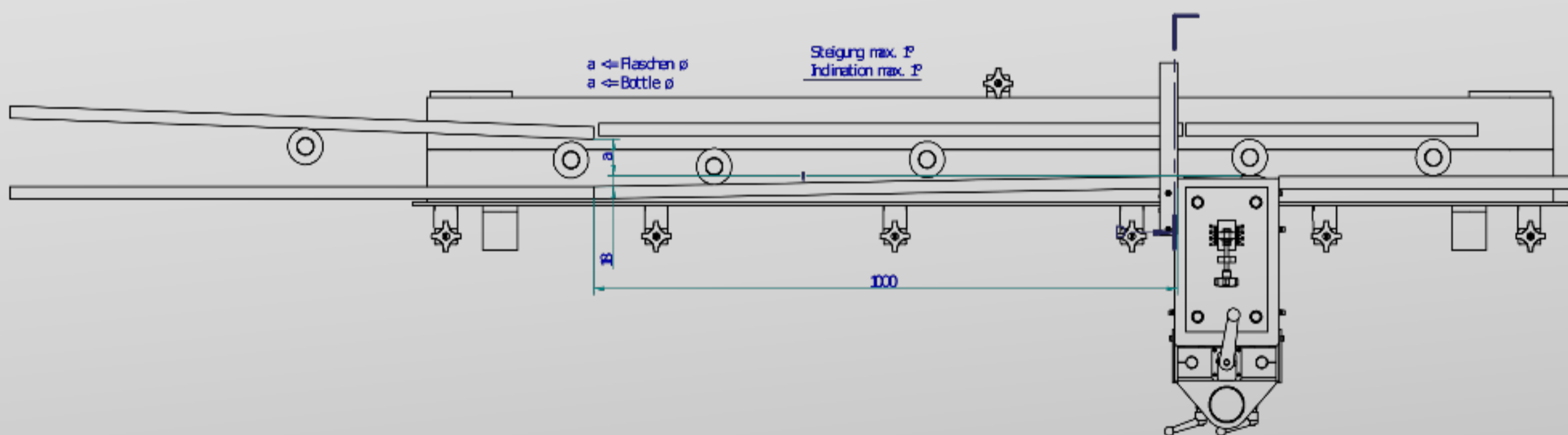
BEVERAGE CANS



PERFORMANCE



Inspecting up to **60.000** one-way PET bottles per hour
 - This equals **16** containers per second at a conveyor speed of **1,5** meters per second!



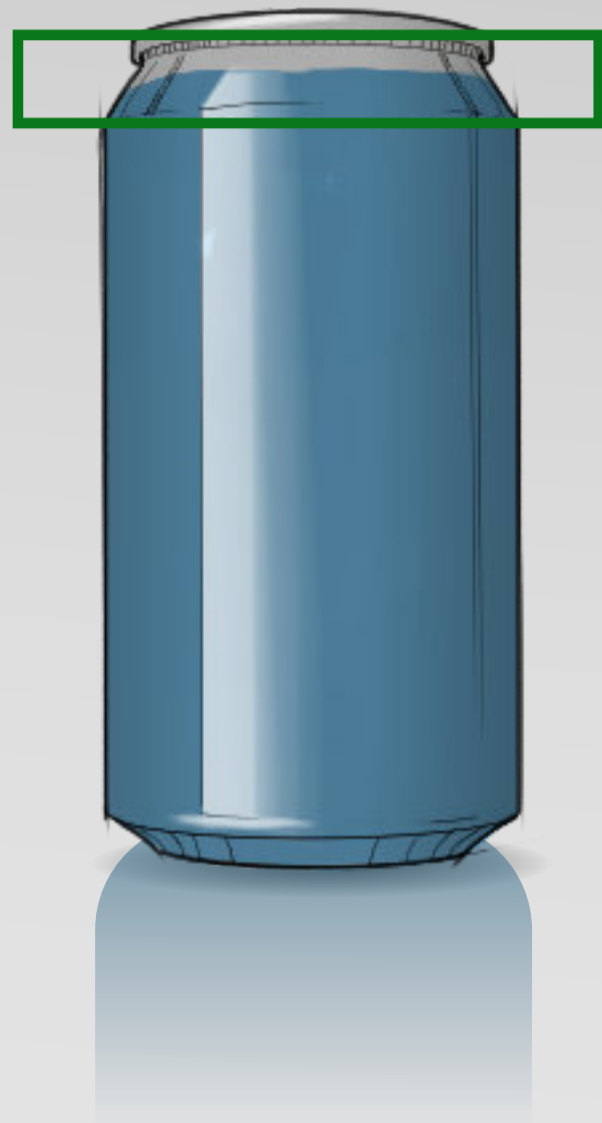
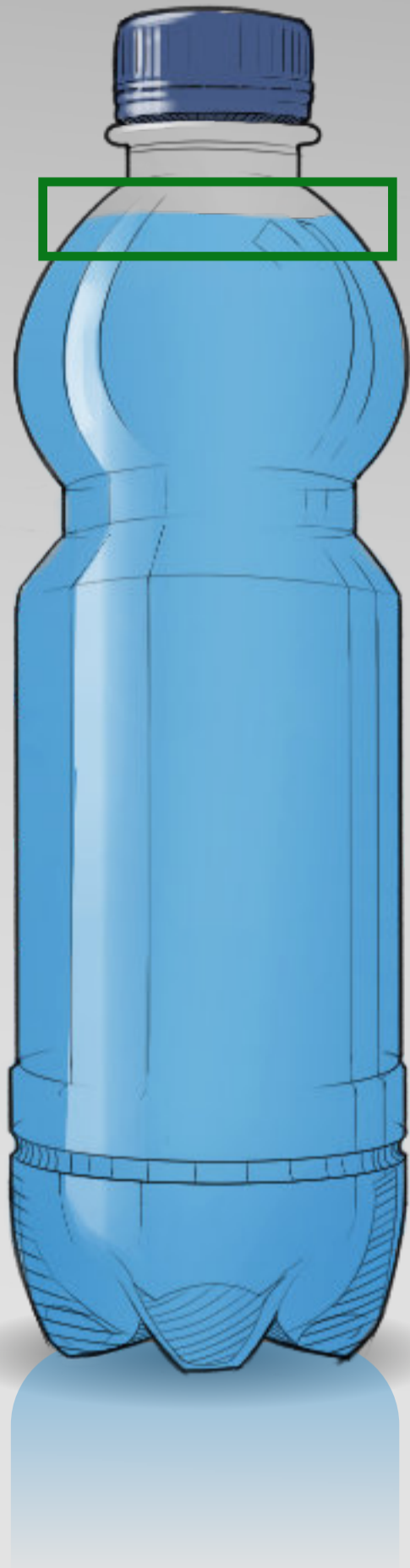
Inspecting up to **90.000** beverage cans per hour
 - This equals **25** containers per second at a conveyor speed of **2,0** meters per second!

MEASURING TOLERANCE IN PSI

0-14,5	<	4,3
14,5-29,0	<	5,8
>29,0	<	14,5

RECOMMENDED EXPANSIONS

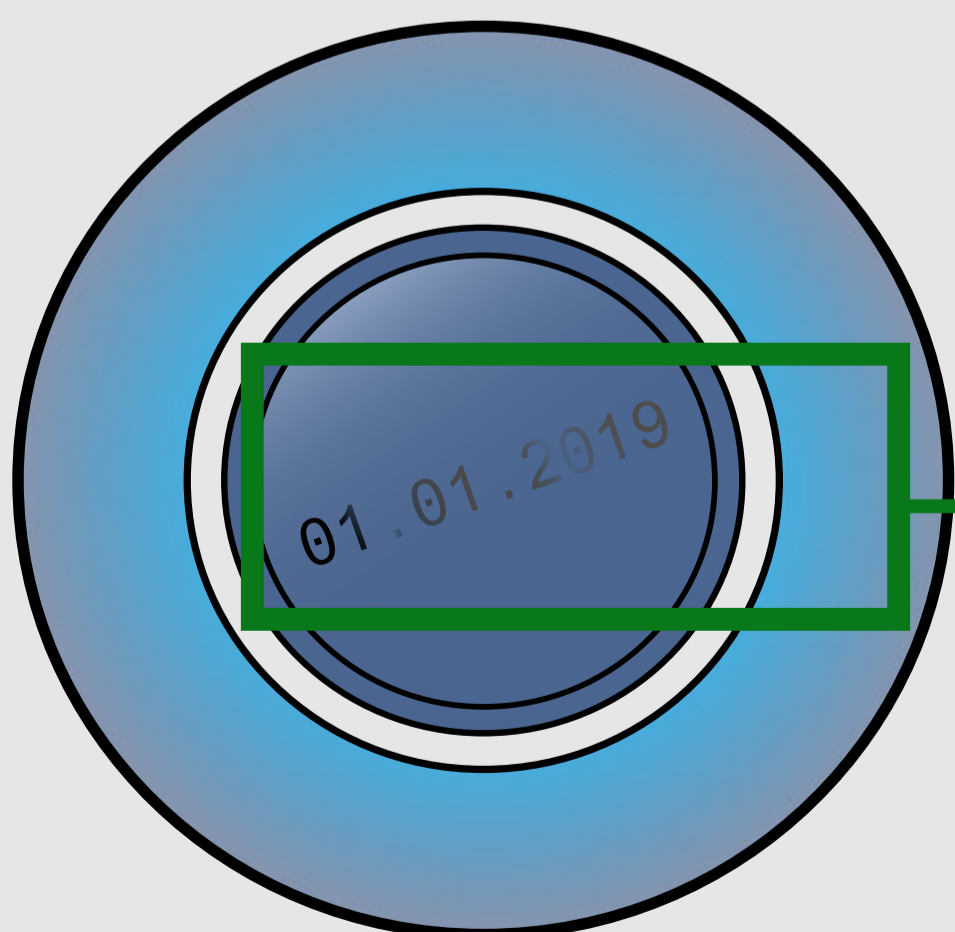
FILL LEVEL INSPECTION



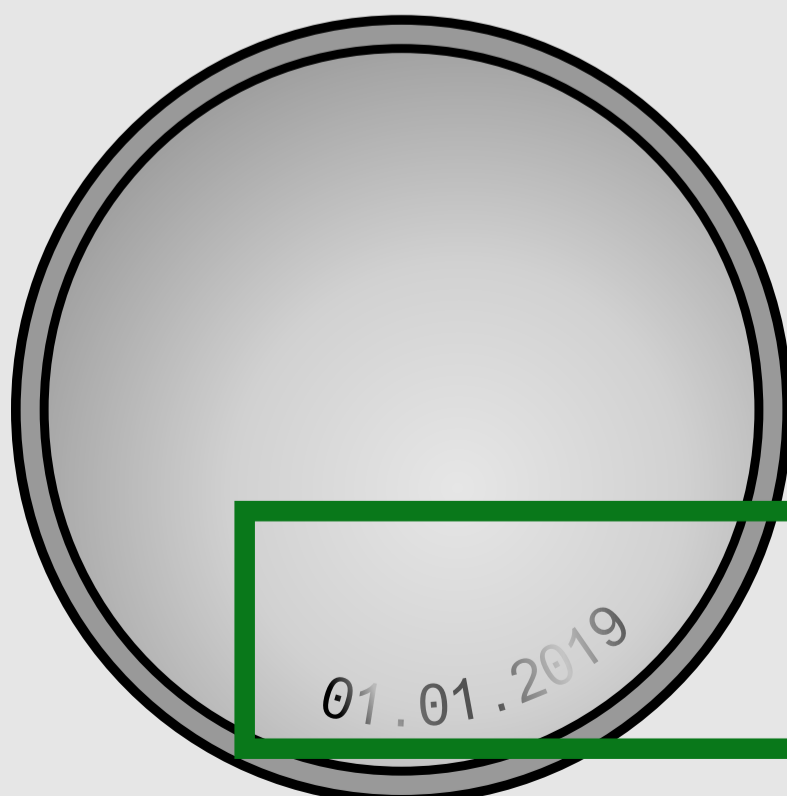
- X-Ray for cans
- Optical method / image processing for bottles

DATE INSPECTION

- Via image processing system



01.01.2019



01.01.2019

ALTERNATIVES?



PROXY ?

- Only for standing beverage cans
- Memory effect (closure bulge)
- No analogue evaluation



SQUEEZER ?

- Risk of damaging the containers
- Considerable wear & tear / huge maintenance efforts
- complex integration



ULTRASONIC BATH ?

- Contamination of containers and the environment
- Only with additional fill level inspection (additional cost)
- Low measurement accuracy

TECHNICAL DATA

Power Supply Measuring Bridge: Control Unit:	24 V= 230 V~ / 50/60 Hz
Protection class during operation: With covered measuring cell:	IP 42 IP 64
Environmental temperature range during operation:	5 - 42 °C
Dimensions of the measuring bridge (WxHxD):	200x350x260 mm
Measuring range:	0 - 43,5 PSI

Stratec Control Systems GmbH

Ankerstrasse 73

75203 Königsbach-Stein

Tel: (+49)7232 - 4006 0

Fax: (+49)7232 - 4006 25

info@bbull.com



www.bbull.com

QUALITY ASSURANCE